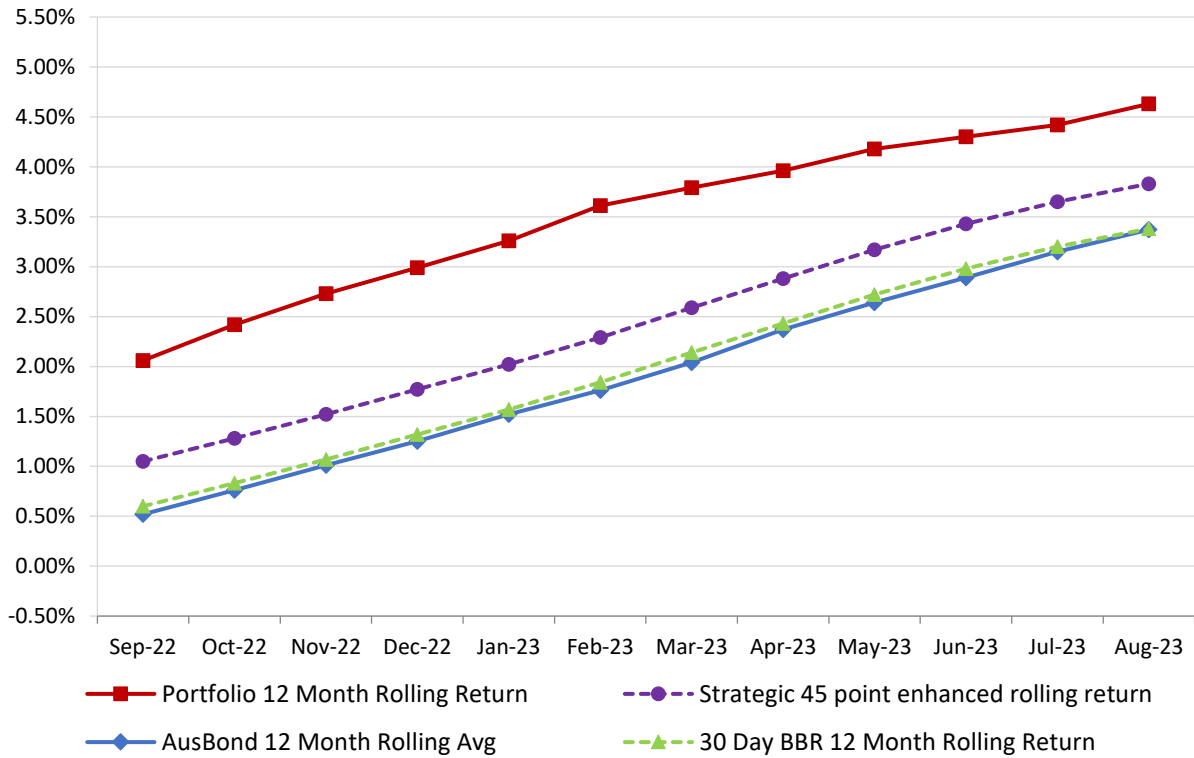


# **Attachment B**

**Investment Performance  
as at 31 August 2023**

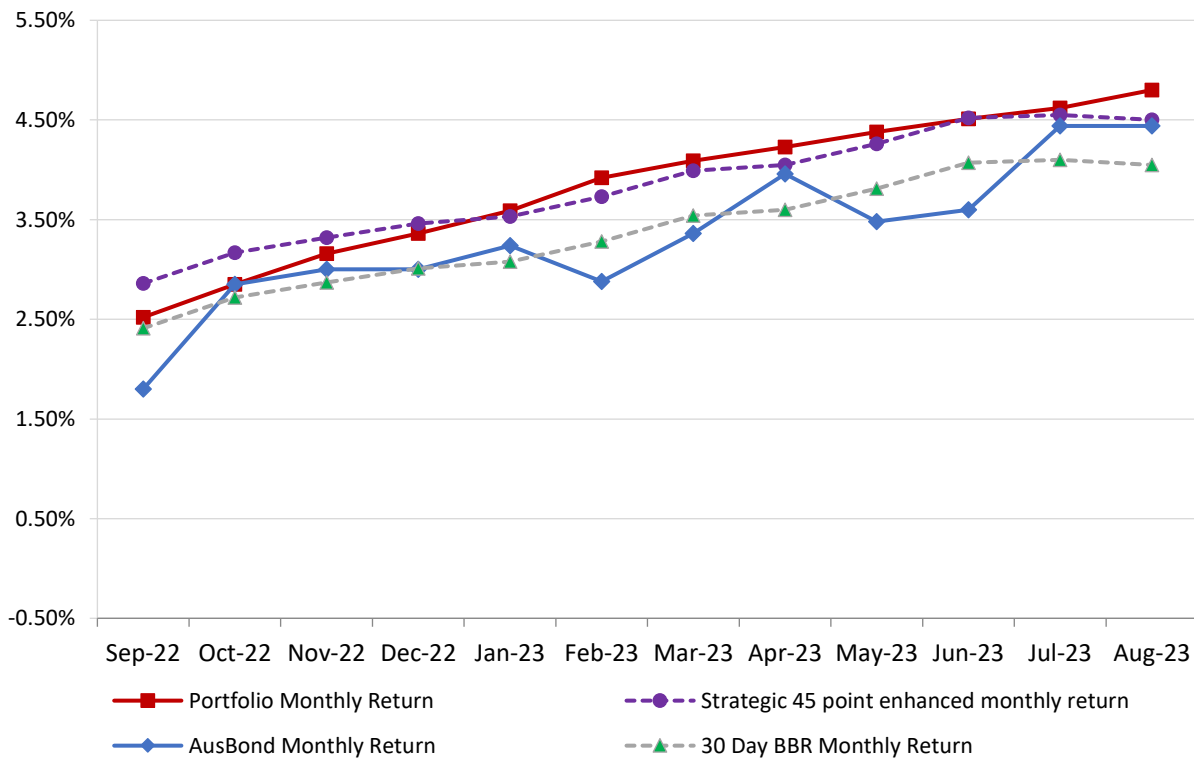
## 12 Month Rolling Averages

**Actual Portfolio vs Strategic Enhanced Benchmark vs AusBond Benchmark vs 30 Day BBR Benchmark  
August 2023**

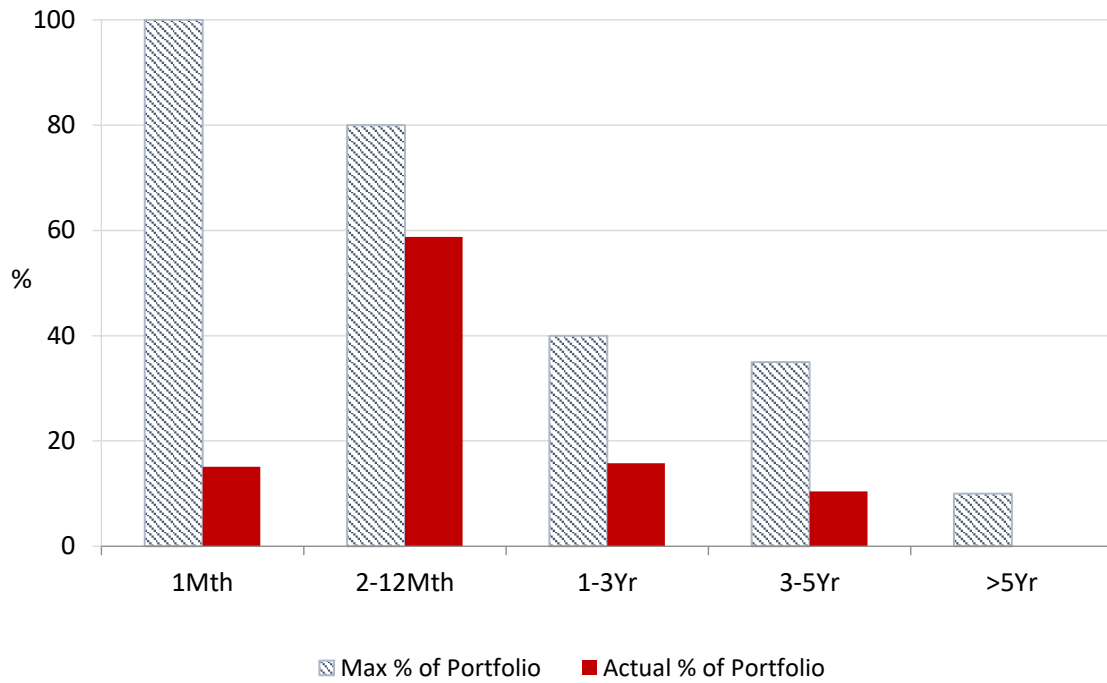


## Monthly Results

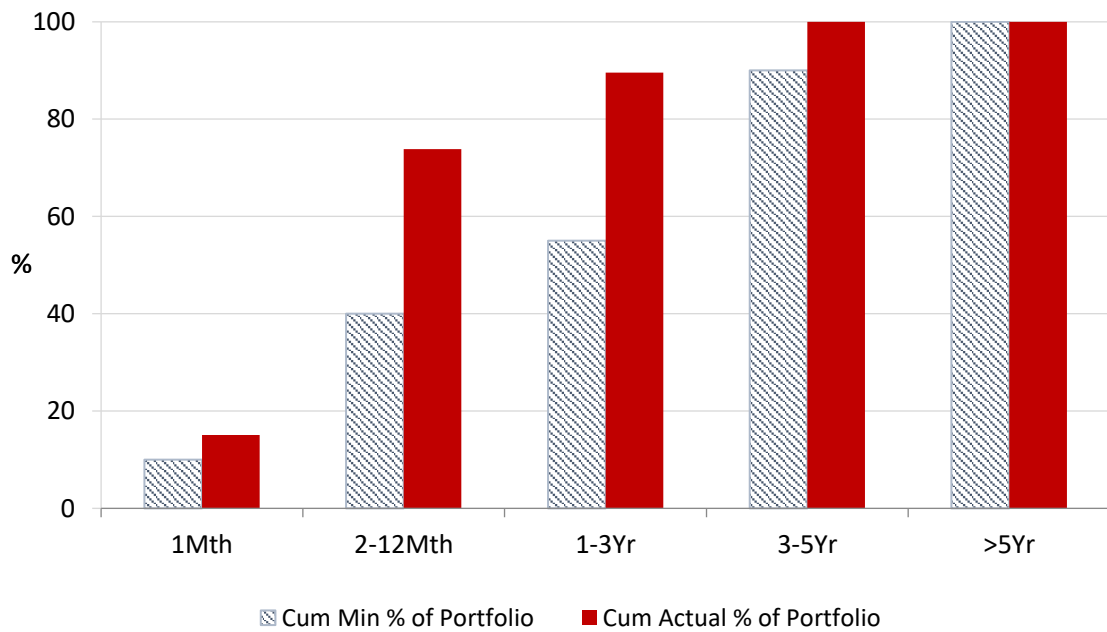
**Actual Portfolio vs Strategic Enhanced Benchmark vs AusBond Benchmark vs 30 Day BBR Benchmark  
August 2023**



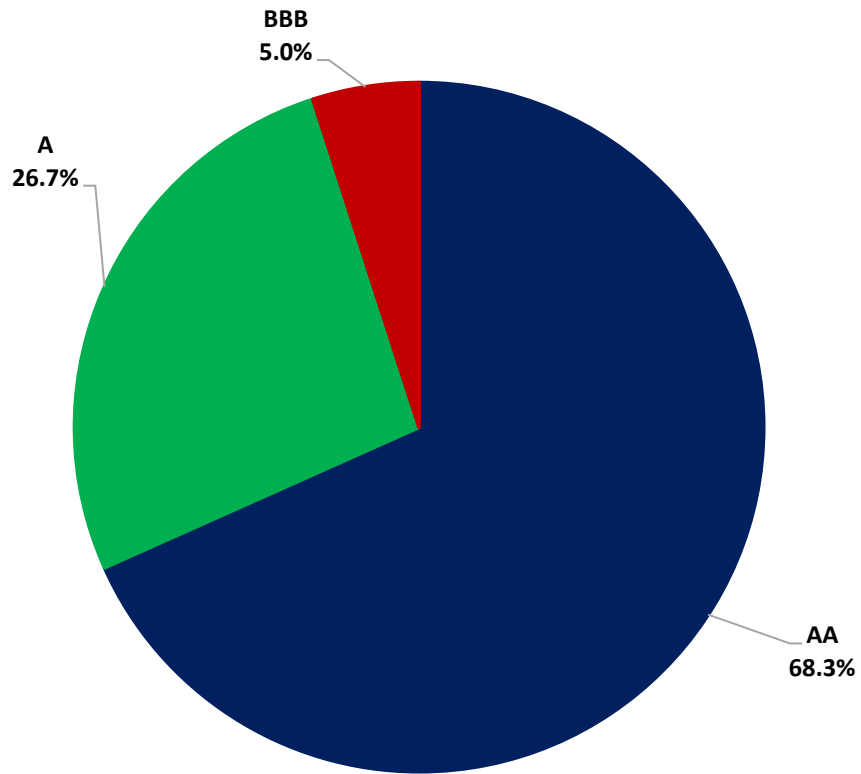
**Portfolio Liquidity - Maximum Allowances as at 31 August 2023**



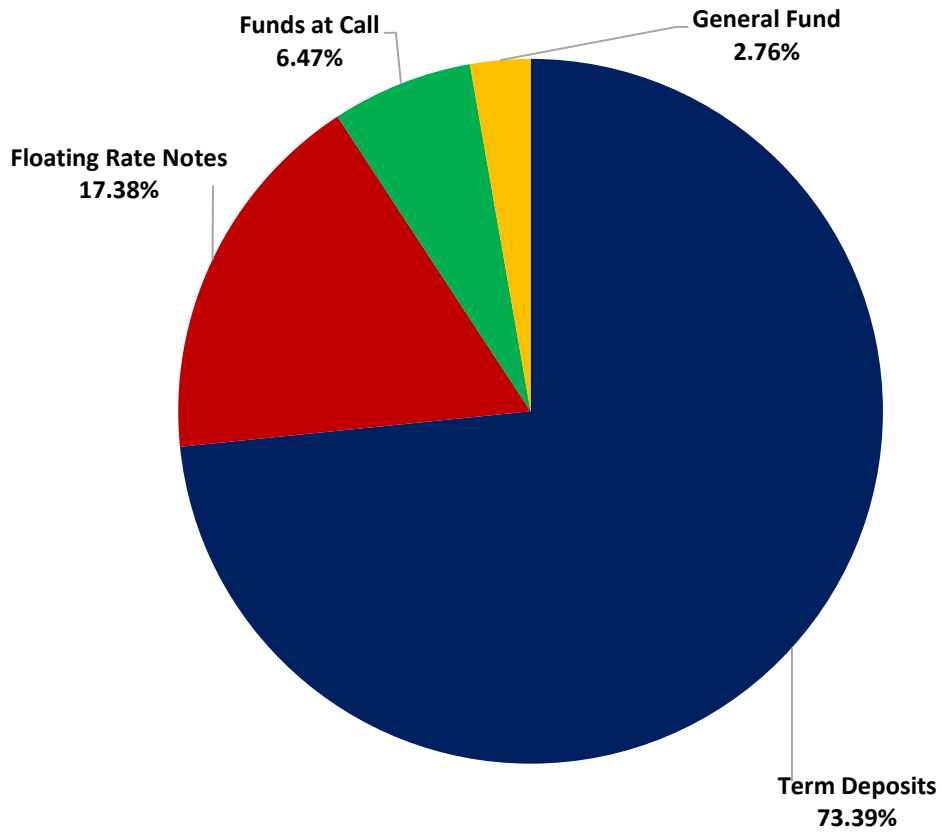
**Portfolio Liquidity - Minimum Allocations as at 31 August 2023**



### Risk Profile as at 31 August 2023



### Risk Profile as at 31 August 2023

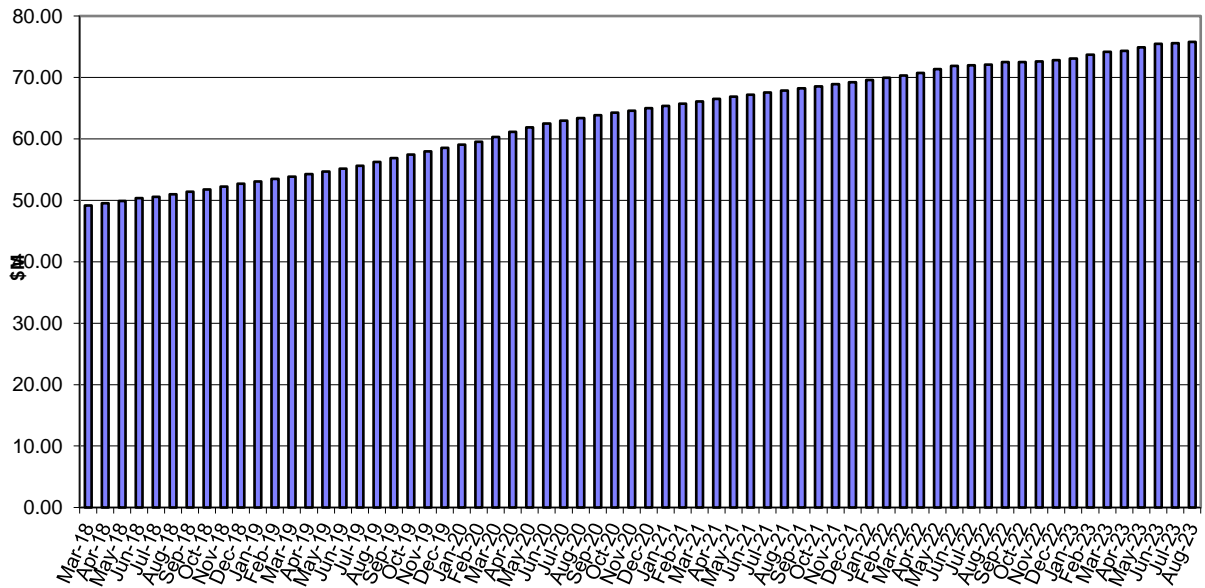


**INVESTMENT AND CASH DISTRIBUTION BY FINANCIAL INSTITUTION**

**as at 31 August 2023**

Institution Category	Financial Institution	Amount \$M	Financial Inst. %	Institution Cat. %
Australian Big 4 Bank (and related institutions)	ANZ Bank	21.0	2.6	
	Commonwealth Bank	249.1	30.5	
	National Australia Bank	78.9	9.7	
	Westpac Banking Corporation	199.5	24.4	
<b>Big 4 Total</b>		<b>548.5</b>		<b>67.1</b>
Other Australian ADIs and Australian subsidiaries of foreign institutions	Bank Australia Limited	9.5	1.2	
	Bank of Queensland	28.0	3.4	
	Bendigo & Adelaide Bank	69.5	8.5	
	Great Southern Bank (formerly Credit Union Australia)	6.5	0.8	
	ING Bank	75.0	9.2	
	Suncorp Bank	53.3	6.5	
	Macquarie Bank Ltd	10.0	1.2	
	Northern Territory Treasury Corporation	10.0	1.2	
Newcastle Permanent Building Society	7.3	0.9		
<b>Other ADI Total</b>		<b>269.0</b>		<b>32.9</b>
<b>Grand Total</b>		<b>817.5</b>	<b>100.0</b>	<b>100.0</b>

### Cumulative Outperformance over AusBond Benchmark - 2018-2023



### Cumulative Outperformance over 30 Day BBR Benchmark - 2018-2023

